



# ***TIDESAFE FREE-FLOATING LIFT***

**4,000LBS-25,000LBS**

## **THE TIDESAFE IS A FREE-FLOATING, HYDRO PNEUMATIC LIFT THAT IS PERFECT FOR SALT OR FRESH WATER**

The TideSafe by HydroGuard Marine is designed with a marine grade, aluminum and stainless steel frame, 316 stainless steel hardware, and UV resistant, polyethylene tanks. The TideSafe floating lift can be tied to a floating dock or installed with a conventional mooring system.

The TideSafe comes standard with a trouble free, maintenance free, manual controller unit or with an optional, self-leveling electronic controller. This lift can be configured for nearly all boat types including standard V-hull, inboard wake, pontoon, tritoon and jet drive boats. The TideSafe is compatible with fixed or floating docks, and works in a U-shaped slip, double-wide slip, L-shaped dock, or square dock.

## **MANUAL CONTROLLER**



- Weatherproof and waterproof polycarbonate housing
- Heavy duty, pedestal mounted controller provides years of trouble free use
- No sensitive electronics or circuit boards
- Easily allows for manual adjustment
- No power needed when lowering the lift
- Raises and lowers lift up to 50% faster than competitors controllers
- GFCI protection
- Power requirement: 120V, 15A



## **ELECTRONIC CONTROLLER**



- Weatherproof and waterproof polycarbonate housing
- User Friendly automated controller with manual over-ride of the lift while lowering or raising
- Controller is pedestal mounted directly on the lift
- Built in safety feature stops the lift in the event of power loss during operation
- GFCI protection
- Power requirement: 120V, 15A



**DESIGNED  
MANUFACTURED  
SUPPORTED**

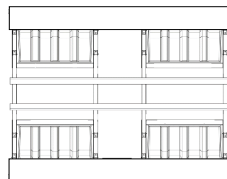
**USA**

# TIDESAFE PRODUCT SPECIFICATIONS



PERFECT FOR FRESH OR SALTWATER

<i>Model</i>	<i>Capacity</i>	<i>Number of Tanks</i>	<i>Tank Capacity</i>	<i>Length</i>	<i>Outside Width</i>	<i>Water Depth (Minimum)</i>
<b>6000</b>	6000 Lbs	4	1500 Lbs.	14'	Beam + 36"	25" + Draft of Boat w/ Engine Raised
<b>8000</b>	8000 Lbs	4	2000 Lbs.	14'	Beam + 36"	32" + Draft of Boat w/ Engine Raised
<b>9000</b>	9000 Lbs	6	1500 Lbs.	18'	Beam + 36"	25" + Draft of Boat w/ Engine Raised
<b>12000</b>	12000 Lbs	6	2000 Lbs.	18'	Beam + 36"	32" + Draft of Boat w/ Engine Raised
<b>16000</b>	16000 Lbs	8	2000 Lbs.	25'	Beam + 36"	32" + Draft of Boat w/ Engine Raised
<b>20K + Lbs.</b>	<b>Call For More Info</b>					



**UP TO 8,000 LBS**



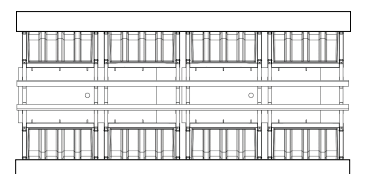
**UP TO 12,000 LBS**



**UP TO 16,000 LBS**



**UP TO 20,000 LBS  
SINGLE AUX TANK**



**UP TO 25,000 LBS  
DOUBLE AUX TANK**



[www.FloatLifts.com](http://www.FloatLifts.com)

**1281 Cedar Hill Rd.**

**910-550-3527**

[info@FloatLifts.com](mailto:info@FloatLifts.com)

**Navassa, NC 28451**