



KAYAK LAUNCH

302509

Dims: 12.5" L x 6.6' W

Weight: 350 lbs.

Comes with 1 set of rails

The new Wave Armor Kayak Launch is made for the beginner or a seasoned kayaker. It's great for getting on the water in early spring through late fall without getting your feet wet! A simple & safe solution - Also great for canals where you have seawalls.

- Can be attached to our beautiful Wave Armor dock, any standard fixed dock or other brands of floating docks
- Rails feature strategically positioned ball-shaped hand grips for effortless entry and launching
- Includes one set of rails, with option for second set for continuous travel-through
- Optional Kayak Launch Rack installs onto the platform to provide smart, simple & handy storage



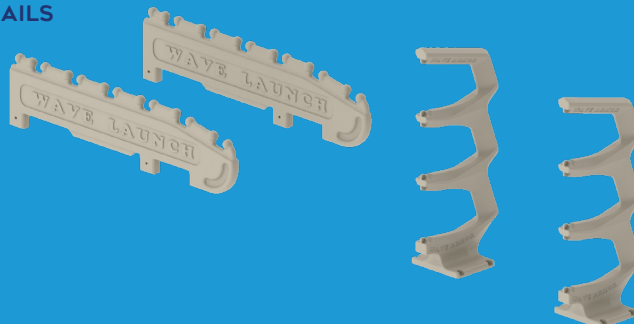
KAYAK LAUNCH EXTRA RAILS

302510

Dims: 6.25' L x 3" W x 19" H

Weight: 60 lbs.

Includes 2



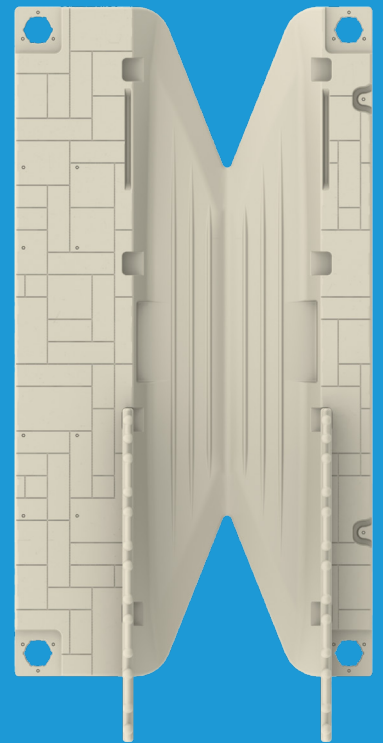
KAYAK LAUNCH RACK

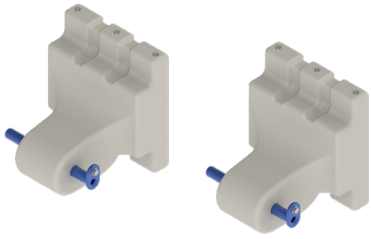
302511

Dims: 6' H x 20" W x 32" D

Weight: 25 lbs.

Includes 2





PRO PORT TO WAVE DOCK KIT

302196

One piece receiving bracket slides directly into the H-Beam channel of the Wave Armor dock section. Allows for hinged-like movement for wave action.

- Includes 2 + hardware



PRO PORT SIDE CONNECTION TO WAVE DOCK KIT

302365

This kit provides simple side attachment with brackets that slide directly on to our Wave Armor dock.

- Includes 1 + hardware

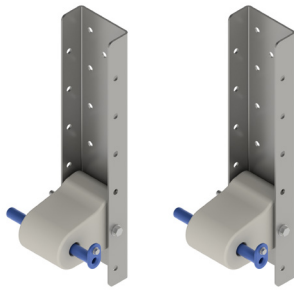


PRO PORT SIDE CONNECTION TO FLOATING DOCK KIT

302507

This kit provides side attachment to other brands of floating docks with simple bolt-on C-Channels.

- Includes 1 + hardware



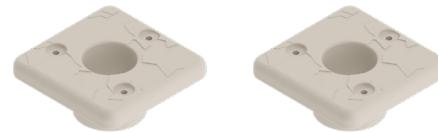
PRO PORT TO FLOATING DOCK KIT

302197 19.75" C-CHANNEL

302198 25.75" C-CHANNEL

This heavy duty poly bracket designed for the Pro Port series creates a receiver that attaches to the galvanized C-Channel on one side and connects with a pin to the port front mounting pocket. Designed to secure to any floating dock structure.

- Includes 2 + hardware



PRO PORT PIPE SLEEVE

302128 2" 302152 3"

Designed to accommodate 2" and 3" pipes. Quick and easy drop-in installation utilizing mounting pipe holes in all 4 corners of the port. Secured with stainless steel hardware.

- Simple installation
- Rigid Rotomolded construction
- Bolt-on design
- 2 pipe sleeves + hardware included



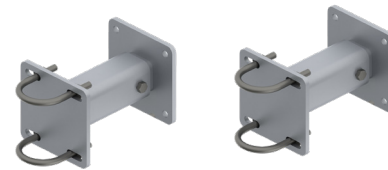
PORT TO FIXED DOCK KIT

301281 FOR 2" PIPE

301282 FOR 4" PIPE

Galvanized steel z-bracket with u-bolt secures port to a fixed dock or sea wall allowing for free movement in fluctuating waters.

- [2] Z-brackets, [4] U-bolts + hardware included
- Requires 2" or 4" pipe sleeves sold separately



TELESCOPING 8-12" PORT TO FIXED DOCK OR SEAWALL KIT

301883 FOR 2" PIPE

301884 FOR 4" PIPE

Fastened to fixed docks the telescoping bracket adjusts horizontally 8" - 12" inches allowing space between dock and port. Pipes secure to these brackets with U-bolts and feed through poly sleeves allowing the port to move freely in fluctuating water levels.

- [2] adjustable aluminum brackets, [2] U-bolts + hardware included
- Requires 2" or 4" pipe sleeves sold separately