



# TIDESAFT FREE-FLOATING LIFT

## 4,000LBS-25,000LBS



### MANUAL CONTROLLER

- Weatherproof and waterproof polycarbonate housing
- Heavy duty, pedestal mounted controller provides years of trouble free use
- No sensitive electronics or circuit boards
- Easily allows for manual adjustment
- No power needed when lowering the lift
- Raises and lowers lift up to 50% faster than competitors controllers
- GFCI protection
- Power requirement: 120V, 15A



### ELECTRONIC CONTROLLER

- Weatherproof and waterproof polycarbonate housing
- User Friendly automated controller with manual over-ride of the lift while lowering or raising
- Controller is pedestal mounted directly on the lift
- Built in safety feature stops the lift in the event of power loss during operation
- GFCI protection
- Power requirement: 120V, 15A



FOLLOW US



# THE TIDESAFE IS A FREE-FLOATING, HYDRO PNEUMATIC LIFT THAT IS PERFECT FOR SALT OR FRESH WATER

The TideSafe by HydroGuard Marine is designed with a marine grade, aluminum and stainless steel frame, 316 stainless steel hardware, and UV resistant, polyethylene tanks. The TideSafe floating lift can be tied to a floating dock or installed with a conventional mooring system.

The TideSafe comes standard with a trouble free, maintenance free, manual controller unit or with an optional, self-leveling electronic controller. This lift can be configured for nearly all boat types including standard V-hull, inboard wake, pontoon, tritoon and jet drive boats. The TideSafe is compatible with fixed or floating docks, and works in a U-shaped slip, double-wide slip, L-shaped dock, or square dock.

## TIDESAFE PRODUCT SPECIFICATIONS PERFECT FOR FRESH OR SALTWATER

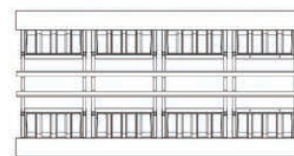
| Model      | Capacity  | Number of Tanks                  | Tank Capacity | Length | Outside Width | Water Depth (Minimum)                |
|------------|-----------|----------------------------------|---------------|--------|---------------|--------------------------------------|
| 6000-422   | 6000 Lbs  | 4                                | 1500 Lbs.     | 14'    | Beam + 36"    | 25" + Draft of Boat w/ Engine Raised |
| 8000-429   | 8000 Lbs  | 4                                | 2000 Lbs.     | 14'    | Beam + 36"    | 32" + Draft of Boat w/ Engine Raised |
| 9000-622   | 9000 Lbs  | 6                                | 1500 Lbs.     | 18' 6" | Beam + 36"    | 25" + Draft of Boat w/ Engine Raised |
| 12000-629  | 12000 Lbs | 6                                | 2000 Lbs.     | 18' 6" | Beam + 36"    | 32" + Draft of Boat w/ Engine Raised |
| 16000-829  | 16000 Lbs | 8                                | 2000 Lbs.     | 25'    | Beam + 36"    | 32" + Draft of Boat w/ Engine Raised |
| 20000-829  | 20000 Lbs | 8 + 1 Auxiliary<br>48"x120"x24"  | 2000 Lbs.     | 25'    | Beam + 36"    | 32" + Draft of Boat w/ Engine Raised |
| 25000-829  | 25000     | 8 + 2 Auxiliary<br>48"x120"x24"  | 2000 Lbs.     | 25'    | Beam + 36"    | 32" + Draft of Boat w/ Engine Raised |
| 32000-1029 | 32000     | 10 + 3 Auxiliary<br>48"x120"x24" | 2000 Lbs.     | 31' 6" | Beam + 36"    | 32" + Draft of Boat w/ Engine Raised |
| 35000-1029 | 35000     | 10 + 3 Auxiliary<br>48"x120"x32" | 2000 Lbs.     | 31' 6" | Beam + 36"    | 38" + Draft of Boat w/ Engine Raised |



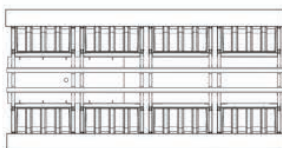
UP TO 8,000 LBS



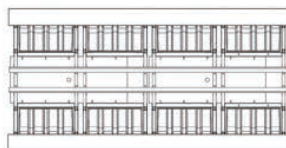
UP TO 12,000 LBS



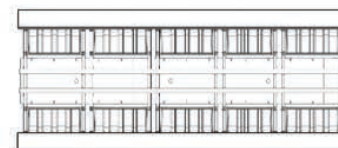
UP TO 16,000 LBS



UP TO 20,000 LBS  
SINGLE AUX TANK



UP TO 25,000 LBS  
DOUBLE AUX TANK



UP TO 35,000 LBS  
TRIPLE AUX TANK

